



In 1888, Toulouse Electricity Company converted the mill into a hydroelectric plant to provide energy for public lighting in the centre of Toulouse.

During the 20th century: the plant generated electricity thanks to machinery installed in 1911 and 1930. EDF became the owner in 1946.

Today, the "EDF Bazacle complex" is one of the must-see cultural spots in Toulouse : due to technical inventions, river poetry and artistic animations for young and old.



Practical information

11 quai Saint-Pierre
31000 Toulouse
bazacle.edf.com

Opening times

Tuesday to Sunday
November to April..... 11 am till 6 pm
May to October..... 11 am till 7 pm

For further information

Phone: 05 62 30 16 00 during opening hours

Group bookings

Phone: 05 34 39 88 70
E-mail: visites.edf.bazacle@manatour.fr

ENTRY AND TOURS FREE

Average time of visit: 1 hour

In the cinema: movies on the Bazacle's history or events relating to our program.



L'énergie est notre avenir, économisons-la !

incOnitO Crédits photos : Adélaïde Maisonnabe - EDF - Jean-Luc Petit - NE PAS JETER SUR LA VOIE PUBLIQUE / Mars 2015.



Visit, see and discover

The EDF bazacle complex

bazacle.edf.com

Toulouse - 11 quai Saint-Pierre

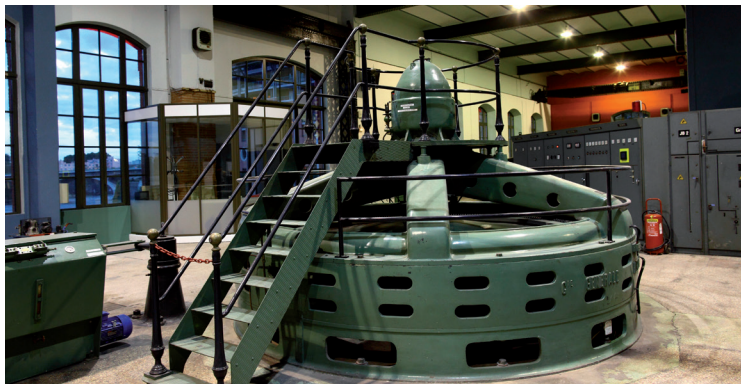
FREE ENTRY



The heart of Toulouse at the centre of your holiday

In the heart of the city of Toulouse, on the edge of the river Garonne, The "EDF Bazacle complex" is a **curious place** intertwining hydropower, heritage, culture and biodiversity for the pleasure of everyone.

Find out **for free** its architecture, history and exhibitions **throughout the year.**



Discover the plant

The engine room gives you things to see and hear! Feel the heartbeat of the hydroelectric plant generators still in action (only during a guided tour).



Revealing the past

On the Garonne riverside in front of the "Hotel Dieu" the panoramic terrace retells the historical dimension of this place including its relationship with the city, the river, craft development around the Bazacle, the fords paths and the operation of mills.



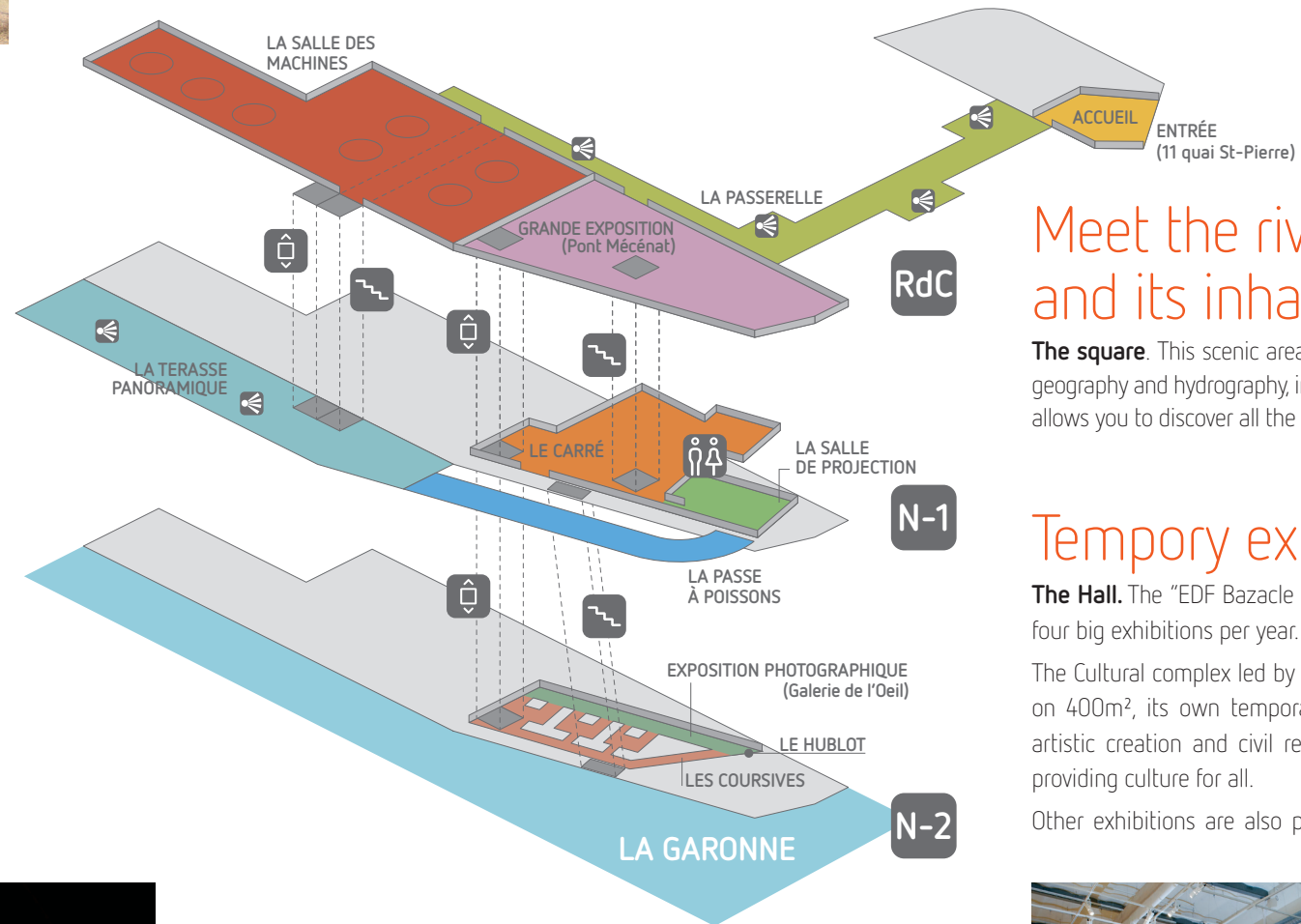
Through the porthole

After the welcome desk, on the **outer bridge**, which leads to the plant, take a look through the porthole and listen to the story of the place.

An audio guide will tell you the history of the buildings and its surroundings.

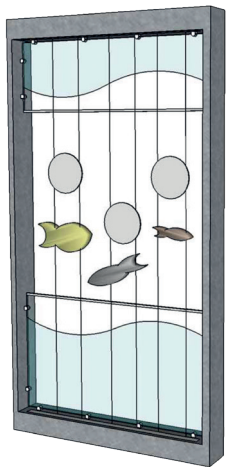
Understanding electricity

The square. This step of the visit holds a permanent exhibition about renewable energies with a focus on hydropower. The energy, climate issues, sustainable development and biodiversity will be explained in an interactive and pedagogic manner.



Meet the river and its inhabitants

The square. This scenic area offers a deeper knowledge of the Garonne : its source, the geography and hydrography, including main uses by humans, fauna and flora. The fish pass allows you to discover all the migratory fish of the Garonne in real size and volume.



Tempory exhibitions

The Hall. The "EDF Bazacle Complex" presents three to four big exhibitions per year.

The Cultural complex led by the foundation EDF shows, on 400m², its own temporary exhibitions inspired by artistic creation and civil reflexion remains faithful to providing culture for all.

Other exhibitions are also presented by local partners

(Science Animation, The Toulouse University, the safeguard mission of the technical and scientific heritage of the region Midi-Pyrénées)

The gallery. Exclusively devoted to photography exhibitions, is located under the Garonne and introduces the world to both professional and contemporary artists, as well as amateur photographers every month.



Exploring the architecture

Inside the historic building, **under the arches of the corridor**, discover the architectural and technical features of the site.