



CSR Policy: EDF Group's Water Commitment



Vieux-Pré dam



We will help conserve water resources, to enhance the resilience of our natural environment and to address water needs in a coordinated and sustainable manner.



Luc Rémont

Chairman and Chief Executive
Officer, EDF Group

March 2025

Water is much more than a resource: it is a vital necessity, a strategic challenge and a precious common asset that we must preserve. At EDF, our history has always been intimately linked to water, so it is naturally at the heart of our commitment. 90% of our electricity production depends on water, it cools the core of our power plants, flows through our hydroelectric plants and our industrial processes. We have learned to listen to it, to tame it without constraining it and to use it in a way to preserve it.

I asked EDF Group to further intensify its commitment to climate challenges, because we must anticipate, innovate and adapt our infrastructures. This requires a better understanding of hydro-meteorological phenomena and ever more efficient and sustainable solutions to reduce our water consumption.

But managing water is about more than just using it to produce reliable, low-carbon energy. It also requires intelligent, concerted management. That's where our teams' expertise lies : ensuring the sustainable use of rivers and in consultation with all local stakeholders. Our ambition is clear: we must reconcile our mission with the preservation of this essential resource.

After all, managing water is not about claiming its use, it's about guaranteeing its availability.

By the end of the century, there will be no less water, but its distribution over the territory and its cycle will evolve. This means we need to adapt today. Our fellow citizens are aware of this, and we are bound by their trust.

Together, we have a duty to invent a future where water remains our strength."

Water, a resource to preserve

Water is **vital** for ecosystems and **essential** to many human activities. Recognized as a '**common good**' in France, it is a resource that must be shared among multiple users. However, the **disruption of the water cycle**, one of the earliest indicators of climate change, places an increasing **pressure** on areas and communities, making it necessary to protect ecosystems, strengthen the **sharing** of water resources and to seek collaborative solutions.

A low-carbon electricity production that is highly dependent on water resources

90 % of EDF Group's electricity production is directly dependent on water resources - hydroelectricity, cooling and industrial processes for nuclear and thermal power plants.

A water intensity of electricity production below

0,9 l/kWh

Water is an essential resource for EDF Group activities, both directly for electricity production and for many of the Group's processes and its suppliers' processes. Beyond these direct dependencies, water also constitutes **a resilience issue for the territories and ecosystems** on which the Group's facilities depend.

EDF must **manage a dual challenge**:

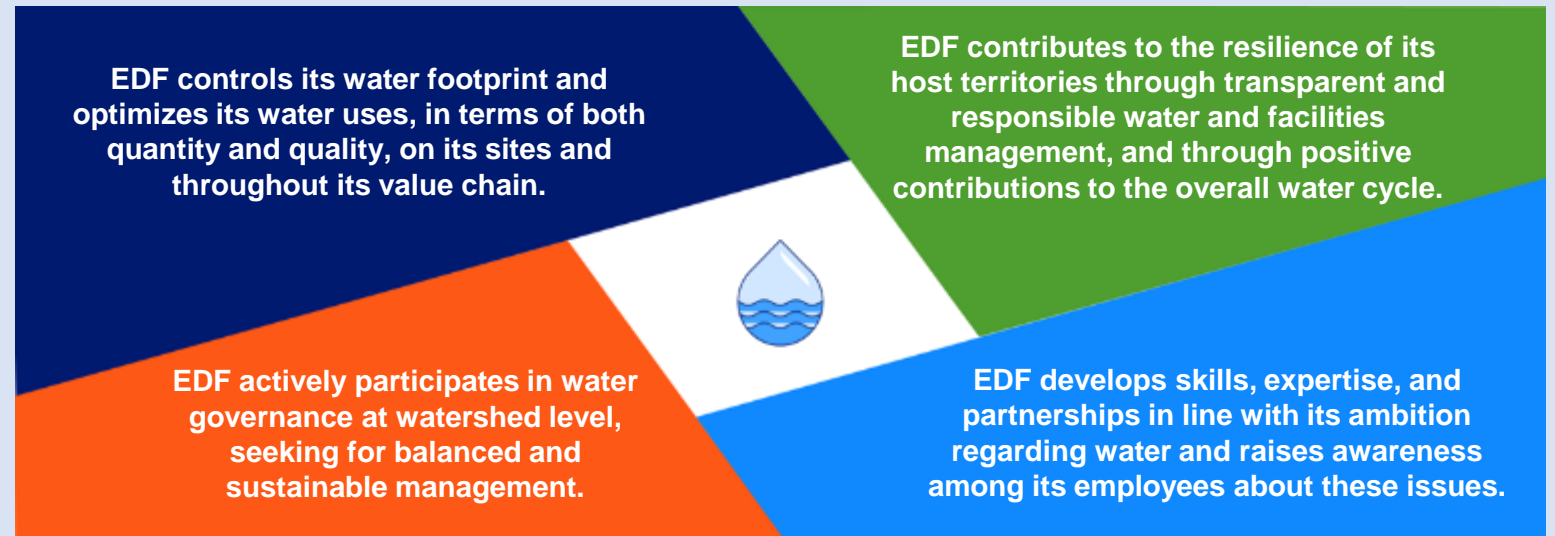
- Maintaining its industrial activities and **producing low-carbon electricity**, while preserving the **flexibility** of its production (this is especially true for hydropower, which is essential for integrating renewable energies into the energy mix) in order to help **mitigate climate change** and in turn limit pressures on the water cycle; and
- **Limiting its dependence and impacts** on water resources, by adapting to climate change and disruptions in the water cycle.



Plan d'Amont dam

Our ambition

As a responsible user and a major player in water resource management, the EDF Group will conserve water resources, in order to enhance the resilience of the natural environment and to address water needs in a coordinated and sustainable manner.



1 of the **12 commitments of the EDF Group's CSR Policy** that addresses the objective of aligning the Group's activities within planetary boundaries.



Optimization of water use



Rainwater storage tanks on Framatome's Montbard site

EDF is committed to controlling its water footprint and optimizing its water uses, in both quantity and quality, on its sites and throughout its value chain.

Why ?

To limit the pressure on water resources and to reduce its dependencies (thereby limiting the risks of industrial or energy production losses during severe low-water periods).

How ?

- EDF is implementing a **water sufficiency** approach in all its entities, based on their specific challenges, which includes better accounting for water flows, seeking to improve the efficiency of its uses (reducing leaks, optimizing processes, recycling and reusing, harvesting rainwater, etc.).

- EDF aims to limit its impacts on the **quality of aquatic environments** :
 - Reducing thermal and chemical discharges from sites (continuous improvement approach)
 - Maintaining minimum flow rates, improving ecological continuity and lock operations, etc.
 - Monitoring environments and improving the understanding of its impacts.
- EDF is committed to ensuring access to **clean water and sanitation** for its employees at all existing and construction sites both in France and internationally.

97 % of the freshwater
withdrawn in France by EDF is directly
returned downstream

In France, the energy sector is the highest for
water withdrawals, but the 3rd in terms of water
consumption



Resilience of host territories

2/3 of the hydroelectric facilities managed by EDF in France provide missions that are complementary to energy production: low-water support, tourism development, etc.

How ?

- EDF operates its **hydroelectric facilities** in a transparent and responsible manner:
 - Agreements for **low-water support missions**,
 - Project studies of **co-development projects for multi-purpose facilities**,
 - Assessment of the contribution to **flood** control (in agreement with the local authorities, and within the limits of its capacities and other obligations (safety, electricity network)).
- EDF promotes **positive contributions to the water cycle**:
 - Preferably with Nature-based Solutions (wetlands restoration, forests preservation, etc.),
 - Seeking for combined water / biodiversity / carbon effects,
 - In a collective approach and by developing pilot projects.
- EDF shares its **expertise** in water management, particularly hydrological monitoring and forecasting.

EDF contributes to the resilience of its host territories through transparent and responsible water and facilities management and through positive contributions to the overall water cycle.

Why ?

To responsibly utilize water resources, being mindful of the sustainability impacts of our activities and fostering the collective resilience of environments and territories.



Serre-Ponçon dam



Water governance and balanced management



Chooz nuclear power plant

EDF actively participates in water governance at watershed level, seeking balanced and sustainable water management.

Why ?

To promote an effective governance model through consultation and consensus-building. This is deemed necessary for preserving water resources and sharing them among different users, including energy production.

How ?

- EDF supports a sharing policy built around 3 principles:
 - Water, a "**common good**" that no one owns,
 - Effective governance organized at **watershed** or valley levels,
 - **Public authorities**, guardians of the public interest and final arbiters of water allocation, particularly to maintain the water-energy balance.
- EDF participates at various levels in the water governance, from the local to the national and cross-border levels, in relation to the watercourses on which it carries out its energy business.
- EDF is attentive to **societal and cultural evolutions** surrounding the management of water resources.



Skills, partners, and employees awareness

EDF develops skills, know-how and partnerships in line with its ambitions for water and raises awareness of these issues among its employees.

Why ?

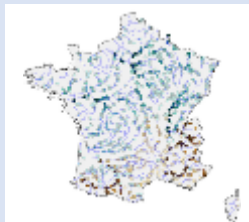
To maintain expertise, make a useful contribution to public debate and decision-making and be in a position to innovate and anticipate changes.

How ?

- EDF maintains and develops its scientific and technical skills, including its know-how in water management, and maintains its scientific and technical partnerships.
- EDF raises awareness of water related issues among its executives, managers and employees.
- EDF communicates on its commitments and reports to its stakeholders on the implementation of its action plans.

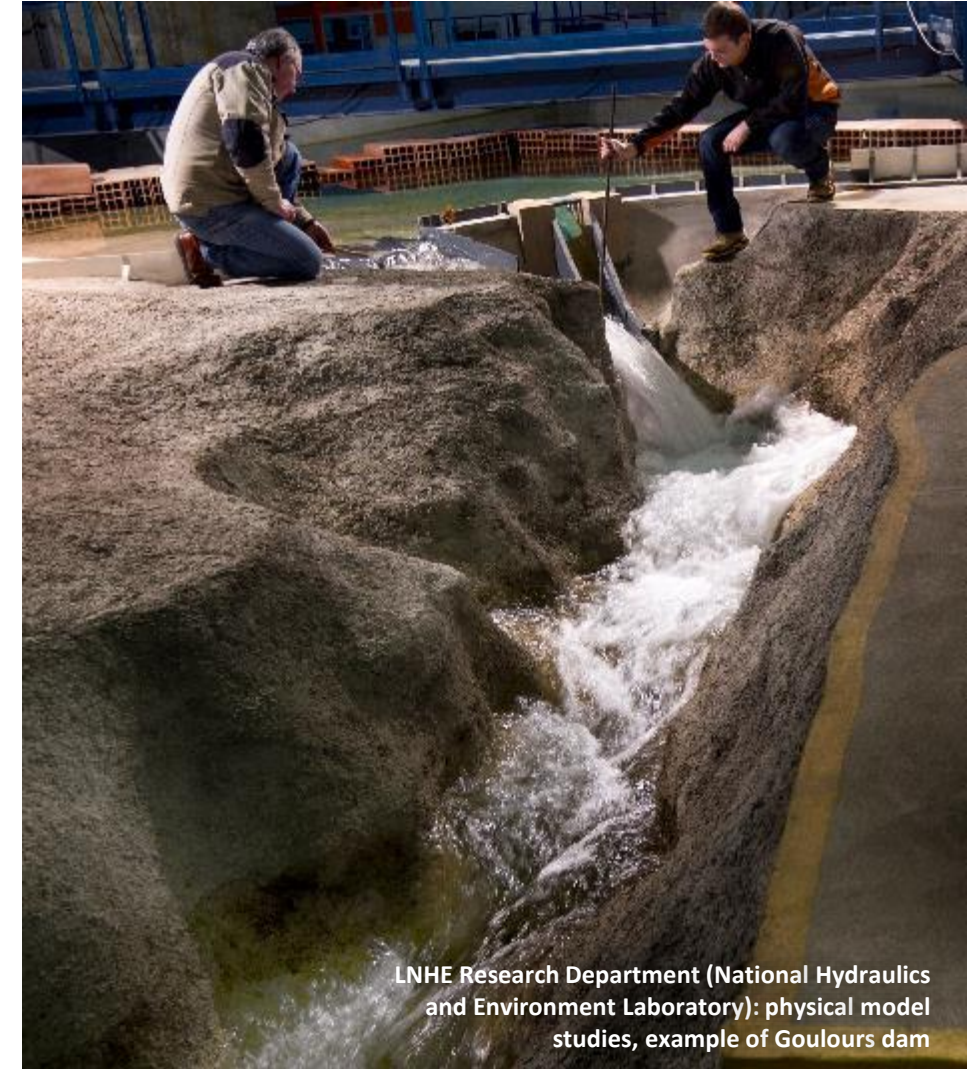


Alongside other public research organisms (Météo-France, INRAE, etc.), EDF took part in the French EXPLORE 2 project, which studied the evolution of water resources by 2100



Hydrological
projections for
surface waters
INRAE

[Find out more](#)



LNHE Research Department (National Hydraulics and Environment Laboratory): physical model studies, example of Goulours dam