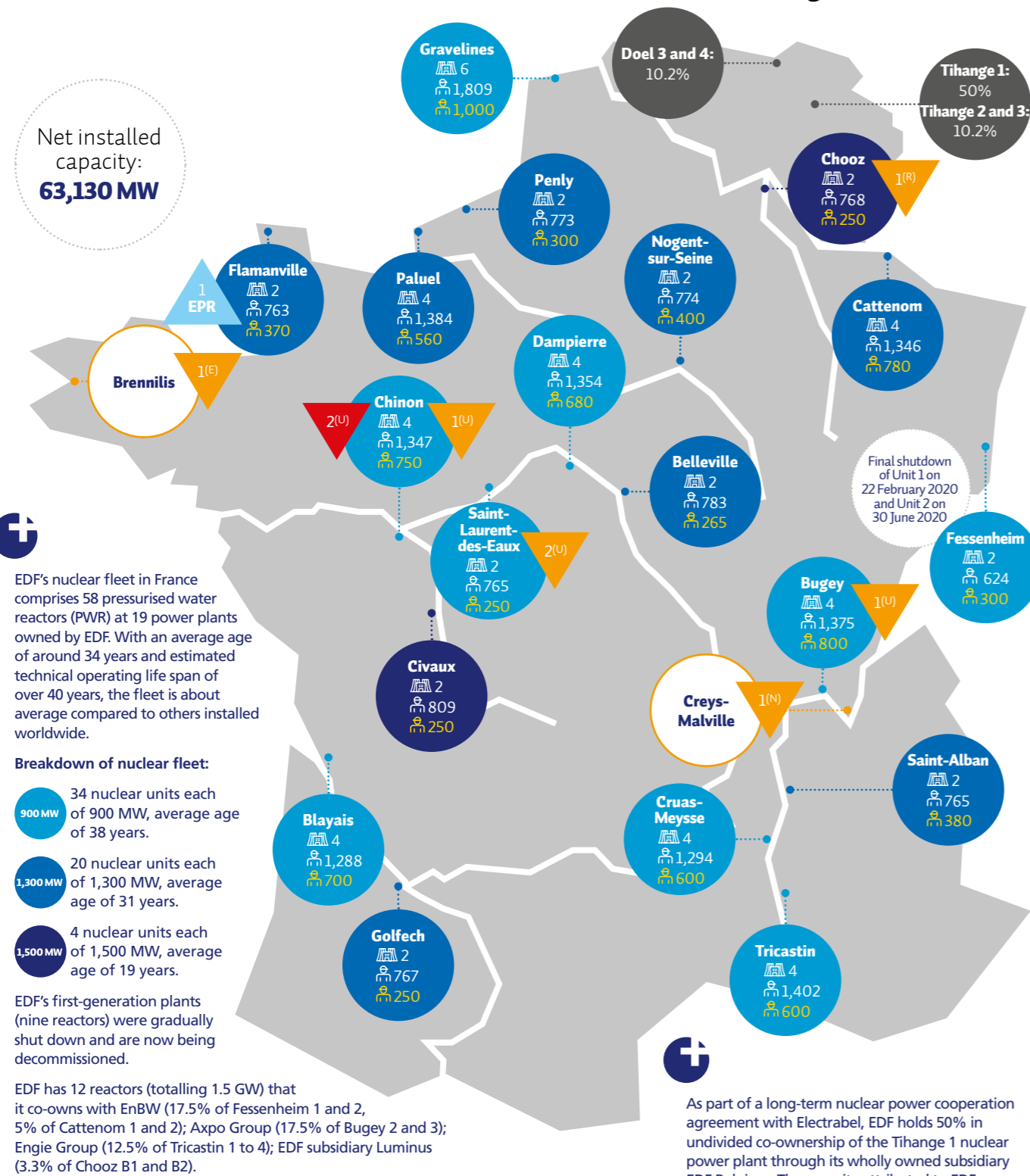


EDF group's nuclear facilities and shareholdings at 31/12/2019

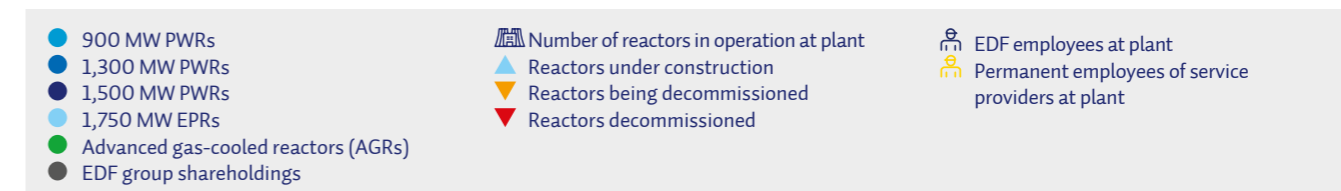
In France



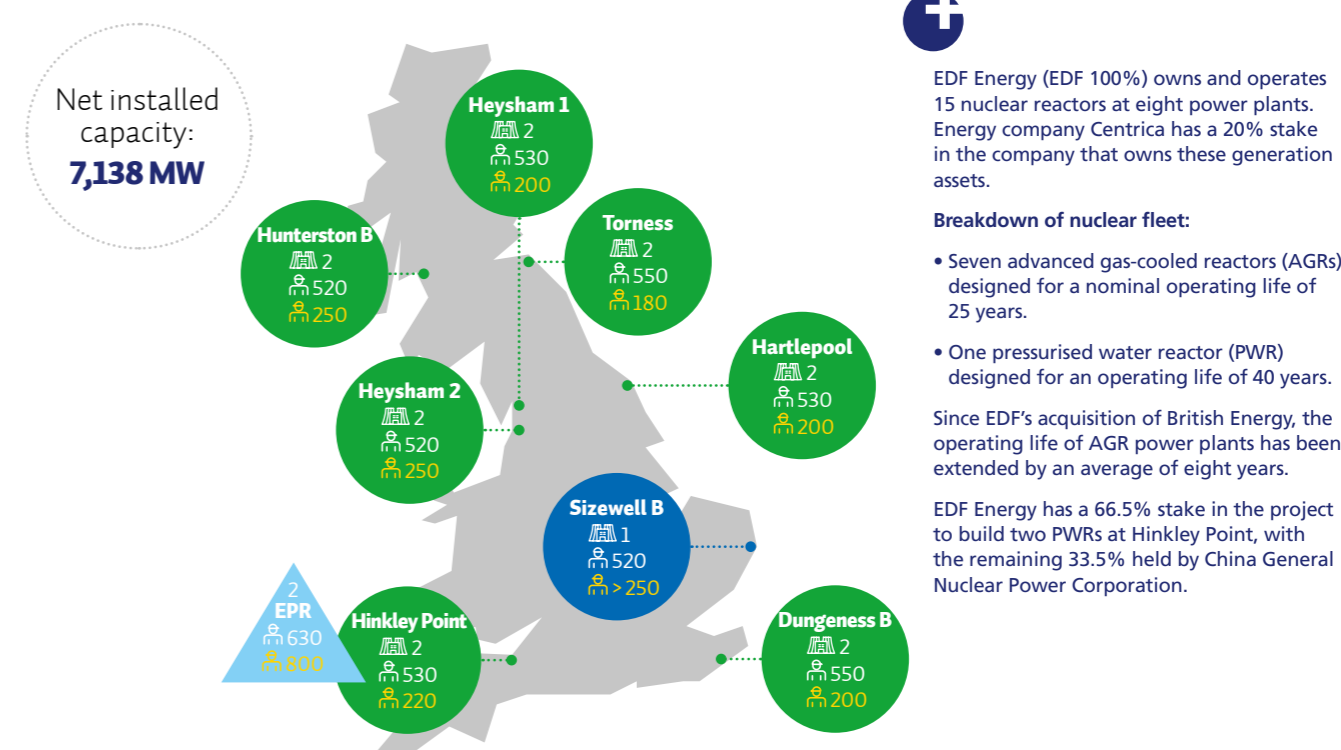
As part of a long-term nuclear power cooperation agreement with Electrabel, EDF holds 50% in undivided co-ownership of the Tihange 1 nuclear power plant through its wholly owned subsidiary EDF Belgium. The capacity attributed to EDF is 481 MW, i.e. 2% of Belgium's total generation capacity. Luminus (EDF 68.63%) owns 10.2%, or 419 MW, of Belgium's Tihange 2 and 3, and Doel 3 and 4 power plants.

(U) Natural uranium graphite gas-cooled reactor (UNGG).
 (R) Pressurised water reactor (PWR).
 (E) Heavy water reactor (HWR).
 (N) Fast-neutron reactor (FNR).

EDF group is the world's leading nuclear operator, with 58 reactors in France and 15 in the United Kingdom. These facilities give France a considerable lead over its European neighbours in terms of limiting greenhouse gas emissions while keeping the price of electricity down. To maintain its position as leader in the generation of very low-carbon electricity, the Group is accelerating development of renewable energy capacity while also ensuring the safety, performance and competitiveness of its nuclear plants.



In the United Kingdom

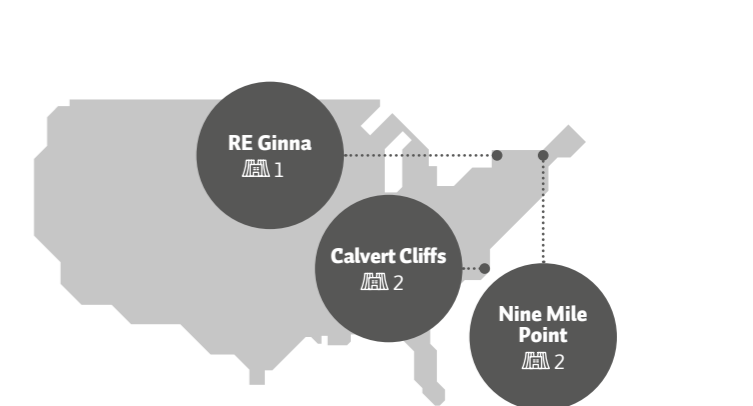


In China



At the Taishan site in Guangdong Province, EDF has commissioned two EPRs, each of 1,750 MW. The first, the world's first EPR to enter commercial operation, was commissioned in December 2018; the second was commissioned in September 2019. EDF holds 30% of the share capital of TNPJVC (Taishan Nuclear Power Joint Venture Company Ltd), which operates the two EPRs.

In the United States



EDF group holds 49.99% of Constellation Energy Nuclear Group (CENG), a joint venture with Exelon Corporation, the leading US nuclear energy operator with five reactors at three plants for total capacity of 4,272 MW (CENG owns 4,042 MW capacity). The operating licences for Units 1 and 2 at Calvert Cliffs, Units 1 and 2 at Nine Mile Point and for R.E. Ginna are valid for 60 years.