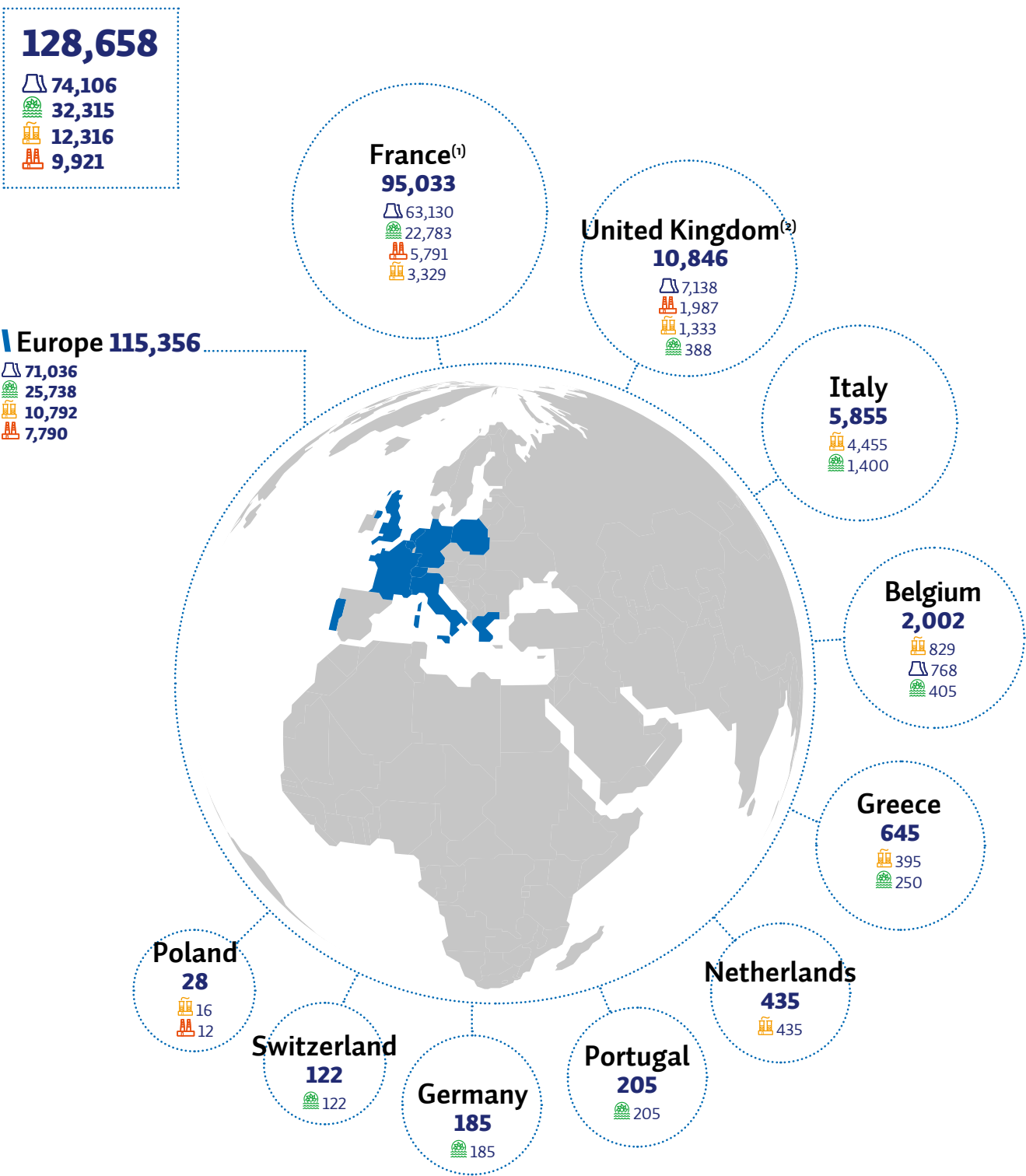
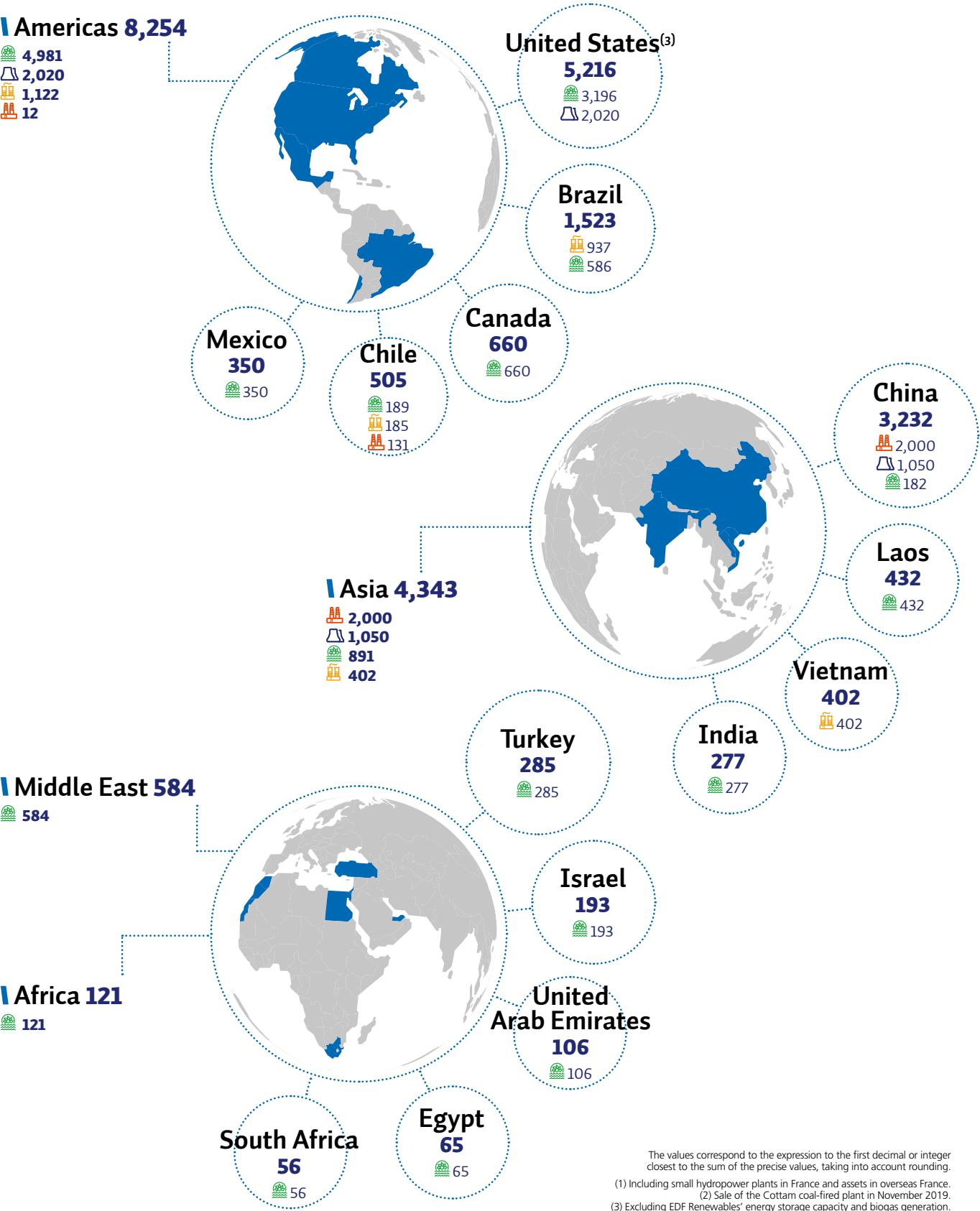


EDF group's net installed capacity by country (in MWe) at 31/12/2019



EDF group's transformation is based on an energy mix that combines nuclear power with renewables. The Group wants to be a key player in the energy programmes of France and the core European countries where it operates by participating in decarbonising the European economy in phase with public policies. Outside of Europe, the Group's investment choices focus on low-carbon projects, especially hydro-, wind and solar power.

|| Data consolidated according to EDF's percentage ownership in Group companies, including associates and joint ventures.



The values correspond to the expression to the first decimal or integer closest to the sum of the precise values, taking into account rounding.
(1) Including small hydropower plants in France and assets in overseas France.
(2) Sale of the Cottam coal-fired plant in November 2019.
(3) Excluding EDF Renewables' energy storage capacity and biogas generation.