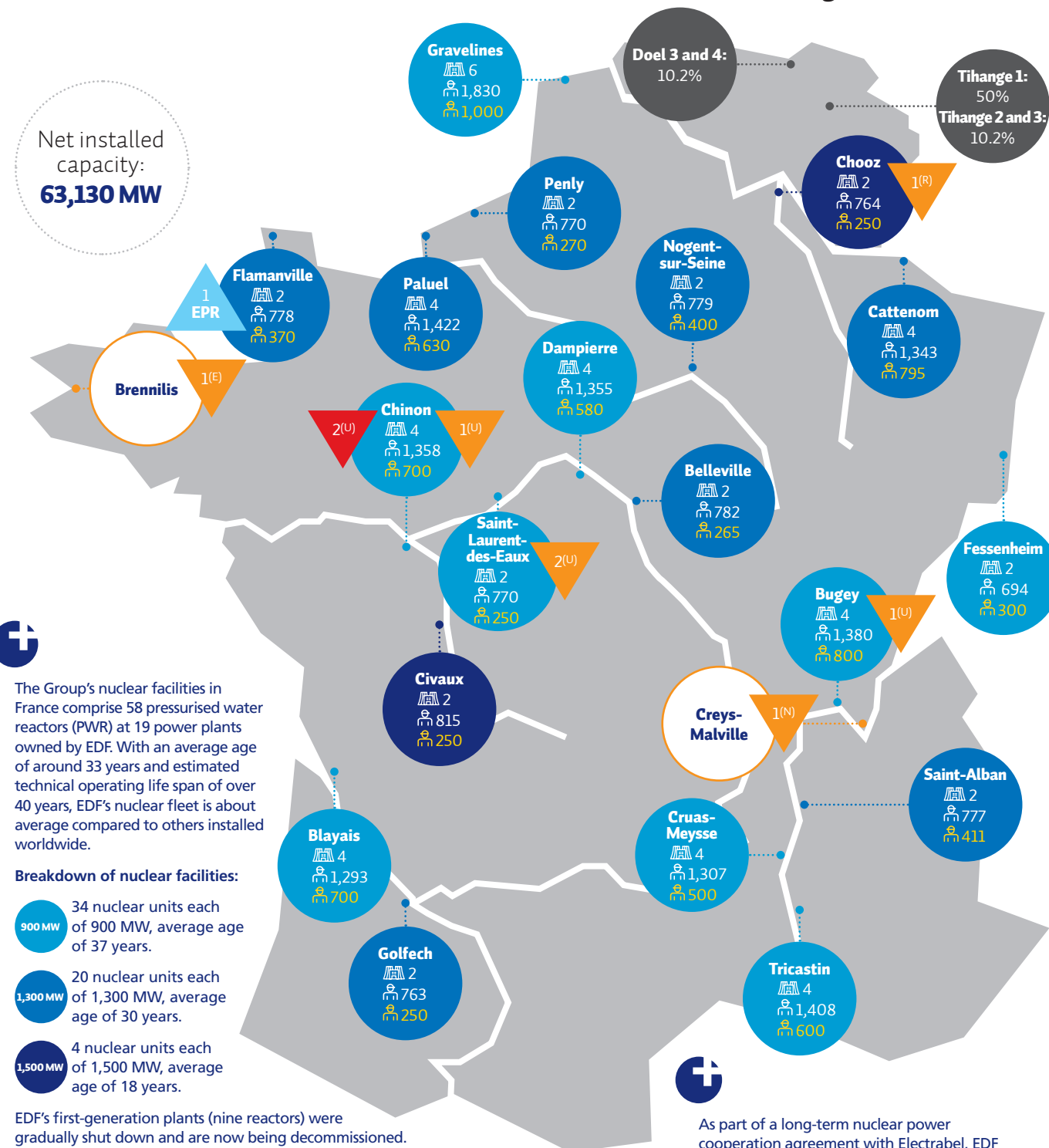


EDF group's nuclear facilities

at 31/12/2018

In France



The Group's nuclear facilities in France comprise 58 pressurised water reactors (PWR) at 19 power plants owned by EDF. With an average age of around 33 years and estimated technical operating life span of over 40 years, EDF's nuclear fleet is about average compared to others installed worldwide.

Breakdown of nuclear facilities:

- 34 nuclear units each of 900 MW, average age of 37 years.
- 20 nuclear units each of 1,300 MW, average age of 30 years.
- 4 nuclear units each of 1,500 MW, average age of 18 years.

EDF's first-generation plants (nine reactors) were gradually shut down and are now being decommissioned. EDF has 12 reactors (totalling 1.5 GW), which it co-owns with EnBW (17.5% of Fessenheim 1 and 2.5% of Cattenom 1 and 2); Axpo Group (17.5% of Bugey 2 and 3); Engie Group (12.5% of Tricastin 1 to 4); EDF subsidiary Luminus (3.3% of Chooz B1 and B2)

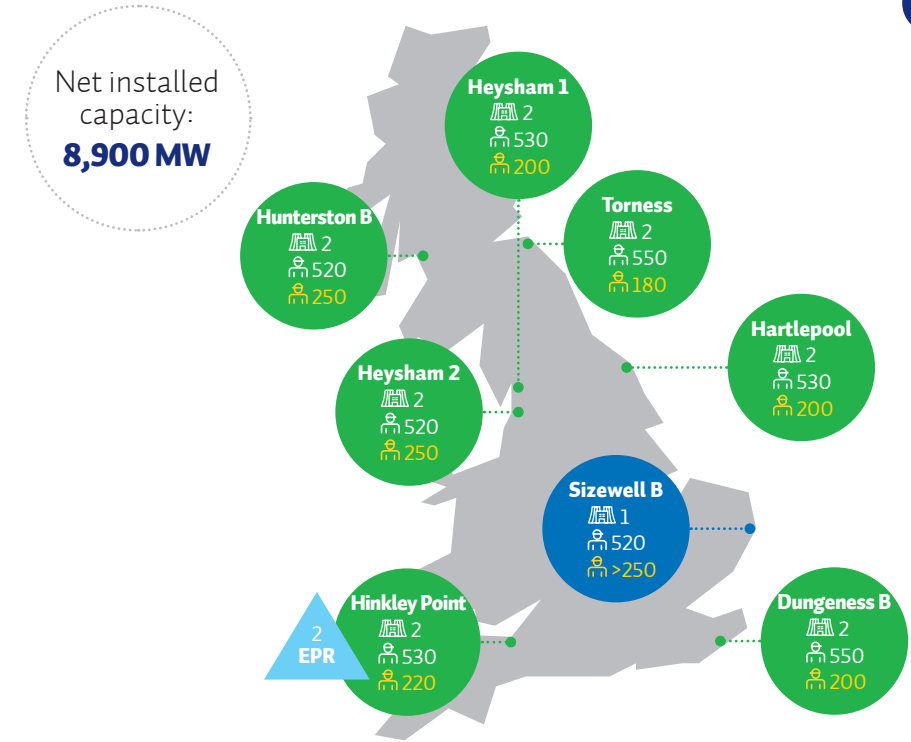
In Belgium

As part of a long-term nuclear power cooperation agreement with Electrabel, EDF holds 50% in undivided co-ownership of the Tihange 1 nuclear power plant through its wholly owned subsidiary EDF Belgium. The capacity attributed to EDF is 481 MW, i.e. 2% of Belgium's total generation capacity. Luminus (EDF 68.63%) owns 10.2% or 419 MW of the Tihange 2 and 3 and Doel 3 and 4 power plants.

EDF group is the world's leading nuclear operator, with 58 reactors in France and 15 in the United Kingdom. These facilities give France a considerable lead over its European neighbours in terms of limiting greenhouse gas emissions while keeping the price of electricity down. To maintain its position as leader in the generation of very low-carbon electricity, the Group is accelerating development of renewable energy capacity while also ensuring the safety, performance and competitiveness of its nuclear plants. It has started construction and commissioning of five EPRs in France, China and the United Kingdom.

- 900 MW PWRs
- 1,300 MW PWRs
- 1,500 MW PWRs
- Advanced gas-cooled reactors (AGRs)
- EDF group shareholdings
- Number of reactors in operation at plant
- Reactors under construction (EPRs)
- Reactors being decommissioned
- Reactors decommissioned
- EDF employees at plant
- Permanent employees of service providers at plant

In the United Kingdom



EDF Energy (EDF 100%) owns and operates 15 nuclear reactors at eight power plants. Energy company Centrica has a 20% stake in the company that owns these generation assets.

- Breakdown of facilities:**
- Seven advanced gas-cooled reactors (AGR), designed for a nominal operating life of 25 years
 - One pressurised water reactor (PWR), designed for an operating life of 40 years

Since EDF's acquisition of British Energy, the operating life of AGR power plants has been extended by an average of eight years. The most recent extensions were announced in February 2016. The operating life of Hartlepool and Heysham 1 was extended by five years, and that of Heysham 2 and Torness by seven years.

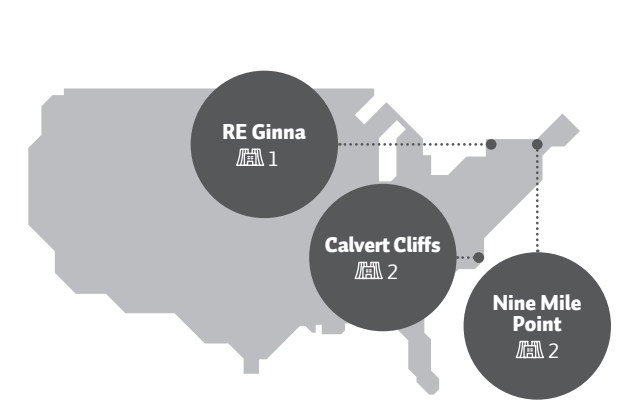
EDF Energy has a 66.5% stake in the project to build two PWRs at Hinkley Point, with the remaining 33.5% held by China General Nuclear Power Corporation.

In China



EDF holds 30% of the share capital of TNPJVC (Taishan Nuclear Power Joint Venture Company Ltd), which was set up to build and operate two EPRs, each of 1,750 MW, in Taishan, Guangdong Province. One of these reactors was commissioned in December 2018, making it the world's first EPR in commercial operation.

In the United States



EDF group holds 49.99% of Constellation Energy Nuclear Group (CENG), a joint venture with Exelon Corporation, the leading US nuclear energy operator with five reactors at three plants for total capacity of 4,272 MW. The operating licences for Units 1 and 2 at Calvert Cliffs, Units 1 and 2 at Nine Mile Point and for R.E. Ginna are valid for 60 years.

(U) Natural uranium graphite gas-cooled reactor (UNGG).
(R) Pressurised water reactor (PWR).
(E) Heavy water reactor (HWR).
(N) Fast-neutron reactor (FNR).