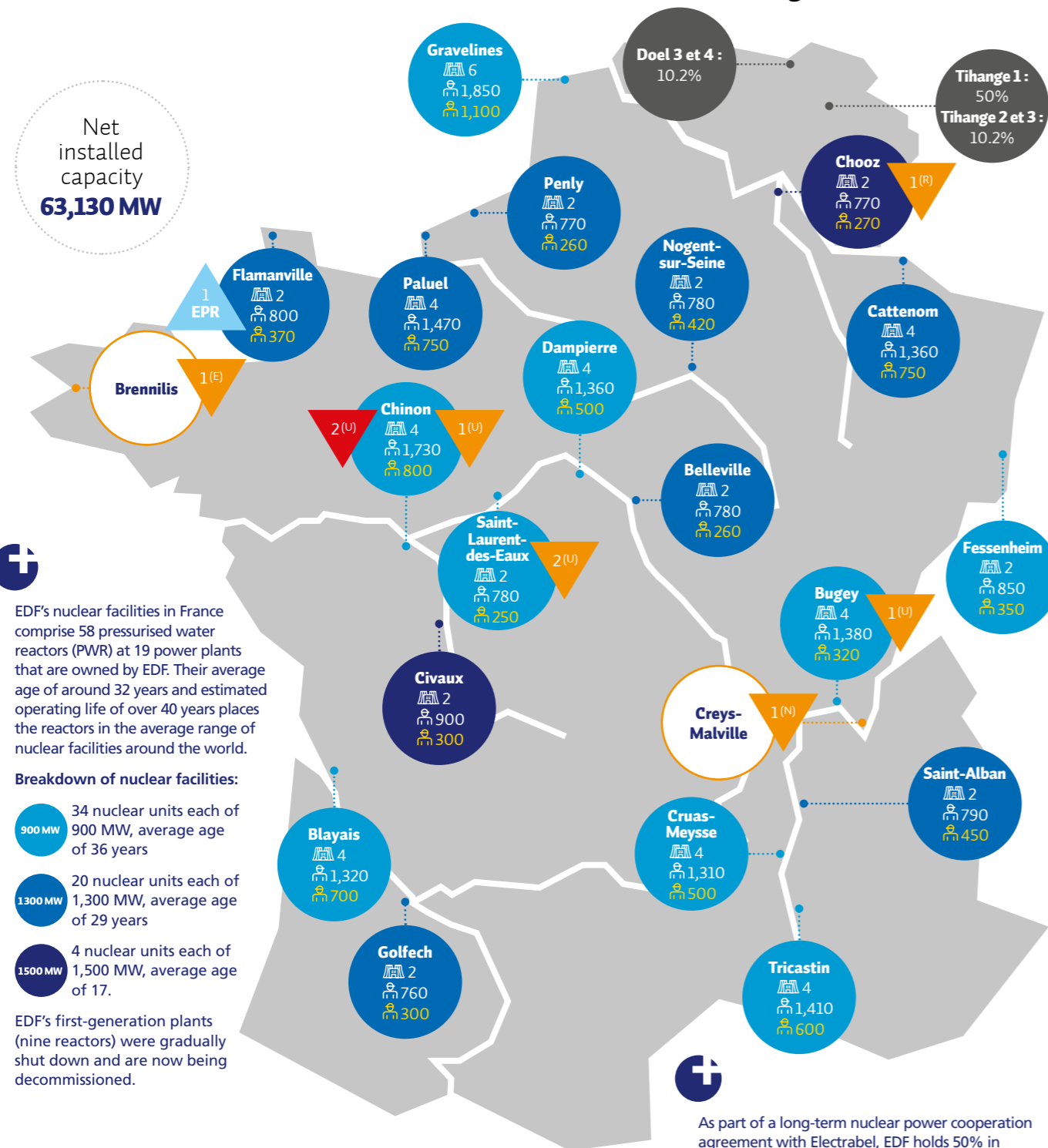


EDF group nuclear facilities in 2017

France



EDF's nuclear facilities in France comprise 58 pressurised water reactors (PWR) at 19 power plants that are owned by EDF. Their average age of around 32 years and estimated operating life of over 40 years places the reactors in the average range of nuclear facilities around the world.

- Breakdown of nuclear facilities:**
- 34 nuclear units each of 900 MW, average age of 36 years
 - 20 nuclear units each of 1,300 MW, average age of 29 years
 - 4 nuclear units each of 1,500 MW, average age of 17.

EDF's first-generation plants (nine reactors) were gradually shut down and are now being decommissioned.

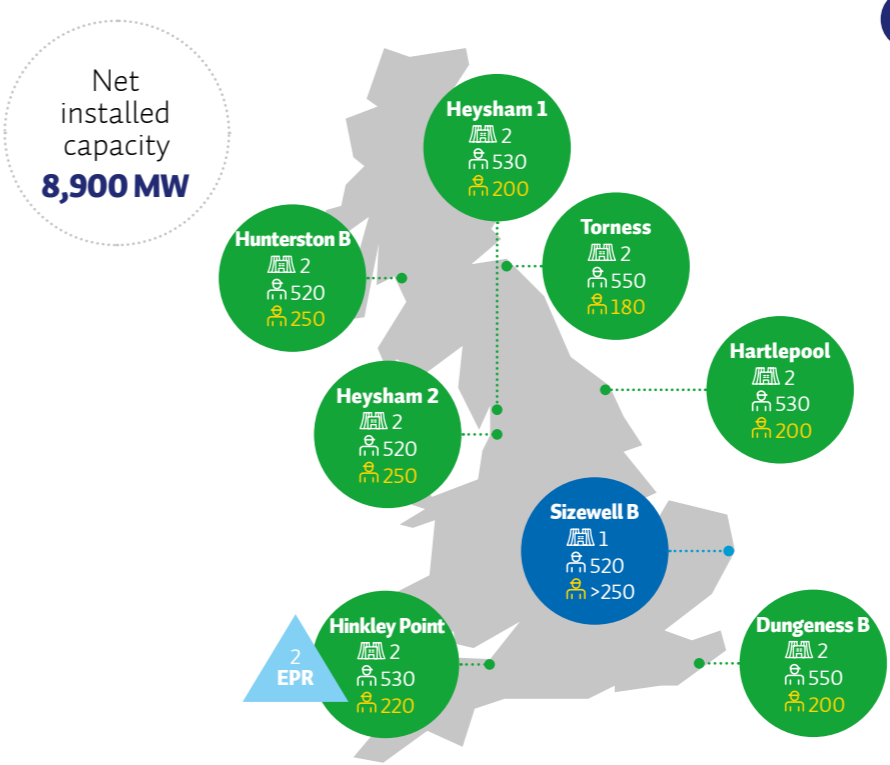
As part of a long-term nuclear power cooperation agreement with Electrabel, EDF holds 50% in undivided co-ownership of the Tihange 1 nuclear power plant through its wholly owned subsidiary, EDF Belgium. The capacity attributed to EDF is 481 MW (2% of total Belgian generation capacity). EDF Luminus (EDF 68.63%) owns 10.2%, or 419 MW, of Belgium's Tihange 2 and 3 and Doel 3 and 4 power plants.

(U) Decommissioning technology used: natural uranium graphite gas-cooled (UNGG) reactor.
 (R) Decommissioning technology used: pressurised water reactor (PWR).
 (E) Decommissioning technology used: heavy water reactor (HWR).
 (N) Decommissioning technology used: fast-neutron reactor (FNR).

Belgium

- 900 MW PWRs
- 1,300 MW PWRs
- 1,500 MW PWRs
- Advanced gas-cooled reactors (AGRs)
- EDF group shareholdings
- Number of reactors at plant
- EDF employees at plant
- Permanent employees of service providers at plant
- Number of reactors being decommissioned
- Number of reactors decommissioned
- Number of reactors under construction (EPRs)

United Kingdom

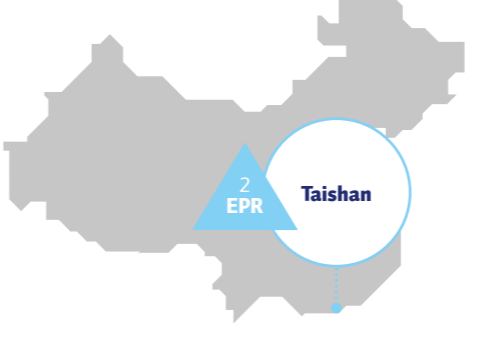


In the United Kingdom, EDF Energy, which is wholly owned by EDF, owns and operates 15 nuclear reactors at eight power plants.

- Breakdown of nuclear facilities:**
- seven plants with advanced gas-cooled reactors (AGR), designed for a nominal operating life of 25 years
 - one plant with a pressurised water reactor (PWR), designed for an operating life of 40 years

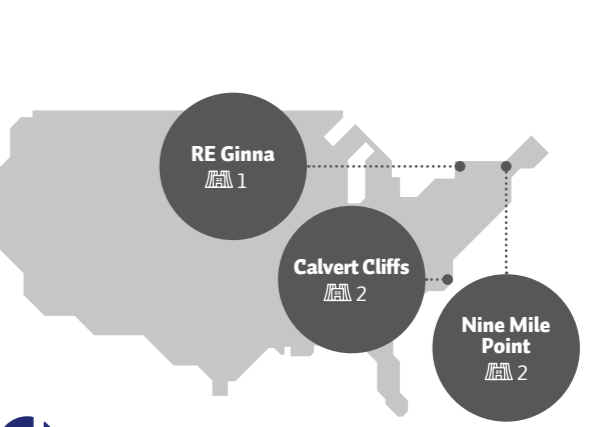
Since EDF's acquisition of British Energy, the operating life of the AGR power plants has been extended by eight years on average. The most recent extensions were announced in February 2016. The operating life of Hartlepool and Heysham 1 was extended by five years, and that of Heysham 2 and Torness by seven years.

China



EDF holds 30% of the share capital of TNPJVC (Taishan Nuclear Power Joint Venture Company Ltd), which was set up to build and operate two EPRs, each of 1,750 MW, in Taishan, Guangdong Province. In April 2018, the Taishan project was granted fuel load authorisation for Reactor 1 at the plant. This reactor is scheduled for commissioning in 2018, with Taishan 2 scheduled for 2019.

United States



In the United States, EDF group holds 49.99% of Constellation Energy Nuclear Group (CENG), a joint venture with Exelon, which is the country's largest nuclear plant operator. CENG operates five pressurised water reactors at three plants for total installed capacity of 4,240 MW. The operating licences for Units 1 and 2 at Calvert Cliffs, Unit 1 at Nine Mile Point and for RE Ginna are for 60 years.